



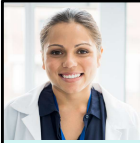
MS Nurse Professional

A pan European MS nurse community and e-learning curriculum

Join today via www.msnursepro.org







MS Nurse PRO with Birmingham City University: Flexible work-based learning (FWBL) module at Bachelors or Masters degree level

Welcome and Introductions

MS Nurse PRO Educational Grant



Are you a nurse interested in deepening your knowledge of Multiple Sclerosis patient care?

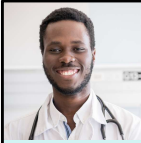
Apply for an educational grant and you'll benefit from:

- reimbursement of all enrolment costs
- 20 credits at Bachelors OR Masters degree level
- virtual group and 1:1 support throughout the study period
- improving the care you are able to deliver to people living with MS!



How to apply:
www.msnursepro.org/educational-grants

2



Meeting agenda

- Overview of MS Nurse PRO
- Overview of the MS Nurse PRO/BCU Module
 - Course content
 - Delivery and support available
 - Assignments
 - Credits and credit transfer
- Grant application process
- What happens next
- Timeline
- Questions and discussion





MS Nurse PRO

The first and only European and accredited nurse training curriculum on Multiple Sclerosis.

- MS Nurse PRO is a registered product of the European Multiple Sclerosis Platform (EMSP)
- Pan-European umbrella organisation working to ensure that the more than one million people affected by multiple sclerosis (MS) in Europe, have a real voice in determining their own priorities.
- First launched in English in 2011/12 and successfully trains qualified nurses who work in the field of MS
- Relunched in 2021, adding community & engagement features to the platform





Overview of MS Nurse PRO

6 e-learning courses



Understanding MS

What causes the disease and how the disease affect a persons' future life.



Clinical Presentation

The different types of multiple sclerosis and their clinical features.



Diagnosis & Assessment

The diagnostic criteria and associated tools.



Care & Support

The relationship of the person with MS and the MS nurse.



Treatment

The pharmacologic management of MS.



Rehabilitation

From goal setting to the different types and methods of rehabilitation.



Certificates of completion and accreditation

Each completed course leads to obtaining a certificate, that can be printed and emailed.

Each completed course gives you an online badge to show your expertise to peers and colleagues.



Understanding MS



Clinical Presentation



Diagnosis & Assessment



Care & Support



Treatment

The Foundation Programme is
accredited for 30 International Continuing Nursing Education Credits
by the International Council of Nurses and
20 learning credits by the Birmingham City University (United Kingdom)

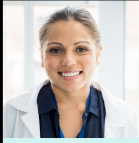




MS Nurse PRO with Birmingham City University FWBL Module- 20 credits at Bachelors or Masters Degree level

- **A pilot: MS Nurse PRO partnered with Birmingham City University (BCU)**
- **Use the knowledge you have gained from working through modules 1-5 and demonstrate how you will embed into your practice and make a difference to the care you deliver to people with MS (pwMS)**
- **10 grants available from MS Nurse PRO to cover the costs of the FWBL module**
 - Course content
 - Delivery and support available
 - Assignments
 - Credits and credit transfer





MS Nurse PRO with Birmingham City University: FWBL module at Bachelors or Masters degree level

Course content

- ➔ Complete and pass modules 1-5 of MS Nurse PRO- it is recommended that you complete these prior to beginning your written assignment for this course.
- ➔ Attend a virtual teaching session which will cover the assignment, learning outcomes and support available in detail
- ➔ Attend an individual or small group tutorial (via MS Teams or Zoom)
- ➔ Write and submit an assignment which meets the course learning outcomes



Delivery of course and support available

- Course teaching, resources and support will be delivered in English.
- Assignment must be submitted in English
- But you can write it in your native language and we can help you translate it into English before uploading to BCU intranet site on submission
- The FWBL Module lasts for 3 months. There will be a virtual teaching session for all students at the beginning of the course followed by individual or small group tutorials (virtual)
- Throughout the course individual feedback and support is available via email and/or virtual tutorials



Assignments- Learning outcomes

Course learning outcomes

At Bachelors degree level (worth 20 credits*): Theory into practice in MS Care	Masters degree level (worth 20 credits*): Enhancing theory into practice in MS Care
On successful completion of this module, you will be able to: <ul style="list-style-type: none">• Critically analyse the assessment of symptoms and impact on people living with MS• Critically appraise the current evidence-base surrounding symptom management relating to the needs of people with MS• Formulate arguments to demonstrate in-depth knowledge relating to a service improvement in MS care	On successful completion of this module, you will be able to: <ul style="list-style-type: none">• Critically appraise the assessment of symptoms and impact on people living with MS• Critique the contemporary evidence-base surrounding specific aspects of MS care relating to the needs of people with MS• Formulate arguments to demonstrate synthesis and application of in-depth knowledge relating to service improvement within MS care

*These credits can be used in conjunction with credits gained from other modules to enable students to work towards a programme qualification at the BCU. We are currently investigating how many credits the BCU credits represent within the European Credit Transfer and Accumulation System (ECTS).



Assignments - format

Level 6: Bachelors	Level 7: Masters
<p>Identify a service improvement that you would like to implement based on embedding something that you have learned from Modules 1-5 into your clinical practice</p> <p>Write a poster which explores the proposal, including a literature review and critique of the current evidence base, a discussion about the impact on pwMS and demonstrates an in-depth understanding of the practical requirements involved in implementing the proposal</p>	<p>Identify a service improvement that you would like to implement based on embedding something that you have learned from Modules 1-5 into your clinical practice</p> <p>Write a paper in the style of a journal article which explores the proposal, including a literature review and in-depth critique of the current evidence base relating to your proposal. The paper should also examine the impact of your proposal on pwMS and explore in depth the rationale for the proposed service improvement and resource implications.</p>



Credits and credit transfer options

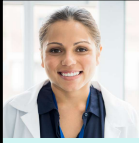
- BCU will award 20 credits at either Bachelors or Masters level depending which level you have enrolled on
- These are equivalent to around 6-8 credits on the European Credit Transfer System (ECTS). These can be applied for as you enroll on the course or retrospectively
- MS Nurse PRO and BCU will work with you and your chosen University to ensure the credits gained from this course are transferred across



12

If you are already studying with an Academic Institution outside the UK and would like to transfer your credits from this course to your studies there, please let us know as you enrolle with BCU. This will enable us to work with your local Academic Institute to ensure your credits are transferred across as you earn them.

Alternatively you have up to 5 years to use the credits you gain with BCU towards your studies elsewhere at the same level. You can apply to have your BCU credits transferred retrospectively via the ECTS system during that period and we will explain more about that process once you are enrolled with BCU.



The grant application process

- Submit your application via the Google Form found on the website by **March 4**
- 10 grants are available
- Applications will be reviewed by the MS Nurse PRO committee at their next meeting on March 9
- Applicants will be informed of the outcome week commencing **March 14**
- If you are unsuccessful, you may still enrol on the FWBL course at a cost of £500 GBP





What happens then?





Any questions?



A European community
for MS professionals



"The MS Nurse PRO e-learning really increased my confidence to answer patient's questions. The training also improved my dialogue with other nurses and doctors."

15



Get in touch with us

→ Platform:

www.msnursepro.org

→ Questions about the Educational Grants

Megan.Roberts@bcu.ac.uk

- Questions about BCU systems and processes

Amanda.andrews@bcu.ac.uk

- Technical questions about the application procedure & support?

msnursepro.comminty@emsp.org



@msnursepro



MSNurse Pro



@European Multiple Sclerosis Platform



@eumsplatform

