


# MS NURSE PROfessional

Foundation course setting a benchmark for MS nursing practice and nursing care across Europe



Designed by a European syllabus committee including specialist MS nurses, patient group representatives and neurologists

Five distinct modules and online accreditation test available



Widely accredited and endorsed



Currently available in six languages:



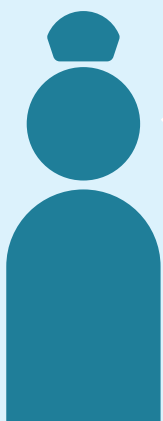
English, Spanish, German, Czech, Italian and Polish



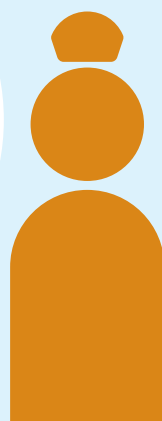
**2,490**  
registered users

**814**  
users completed the course

**95%**  
of users would or have already recommended the course



“The training has given me increased confidence to answer patients questions rather than referring them to colleagues”



“Improving patients’ and families’ understanding of a difficult disease ensures patients do not walk alone on this journey”

[www.msnursepro.org](http://www.msnursepro.org)

This activity is supported by educational grants from:

Founding and lead supporter



Co-supporters

