

# Cost of MS Study in Czech Republic

Eva Havrdová

Jana Blahová-Dušánková

Tomáš Kalinčík

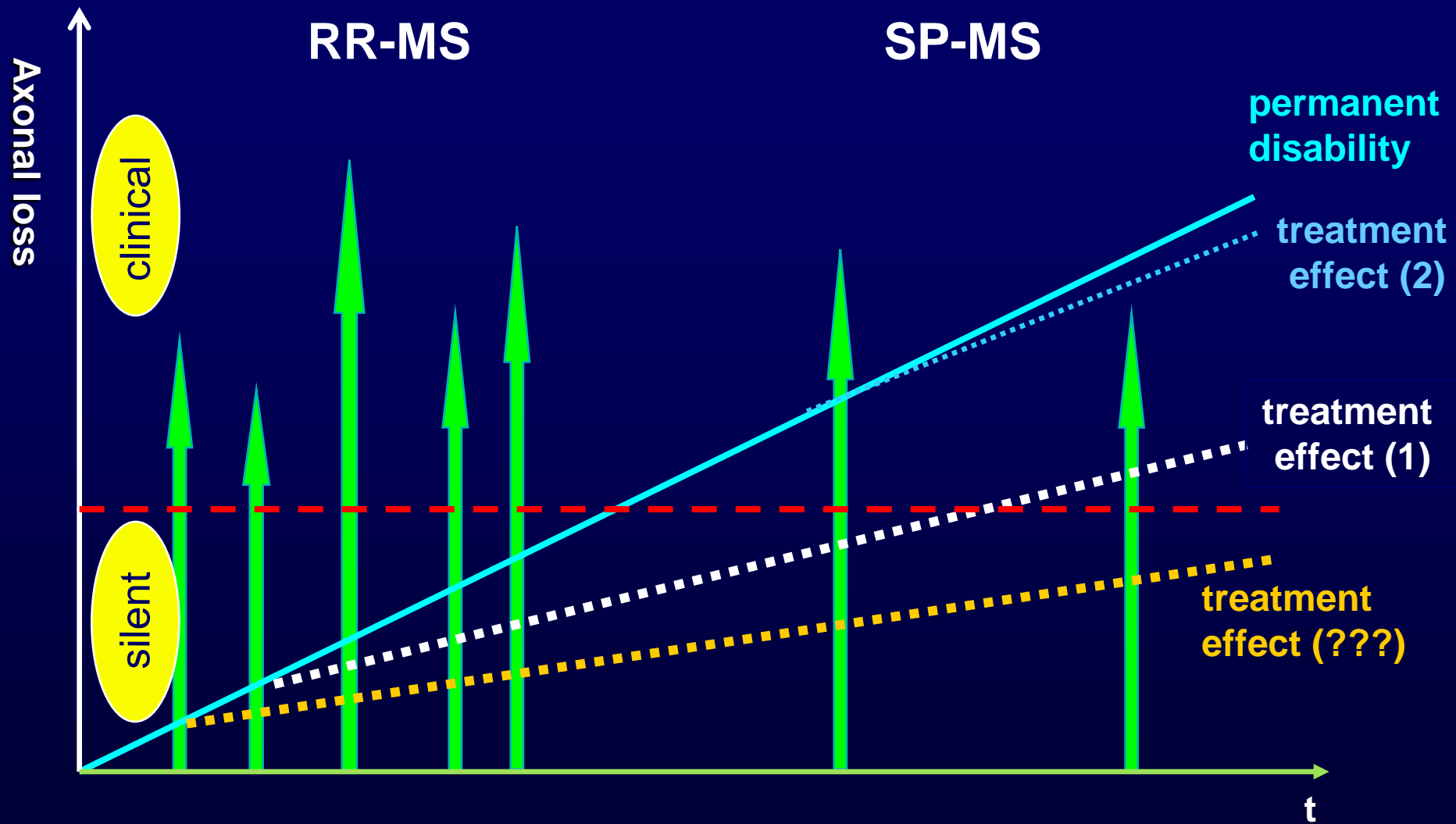
Co-workers from 6 Czech MS Center

Consultants: Gisela Kobelt, Tomas Doležal

Charles University, First Medical Faculty,

Dpt. of Neurology

Praha, Czech Republic



## Negotiations for reimbursement:

- ◆ European Code of Good Practice
- ◆ National societies of professionals
- ◆ National patient organizations

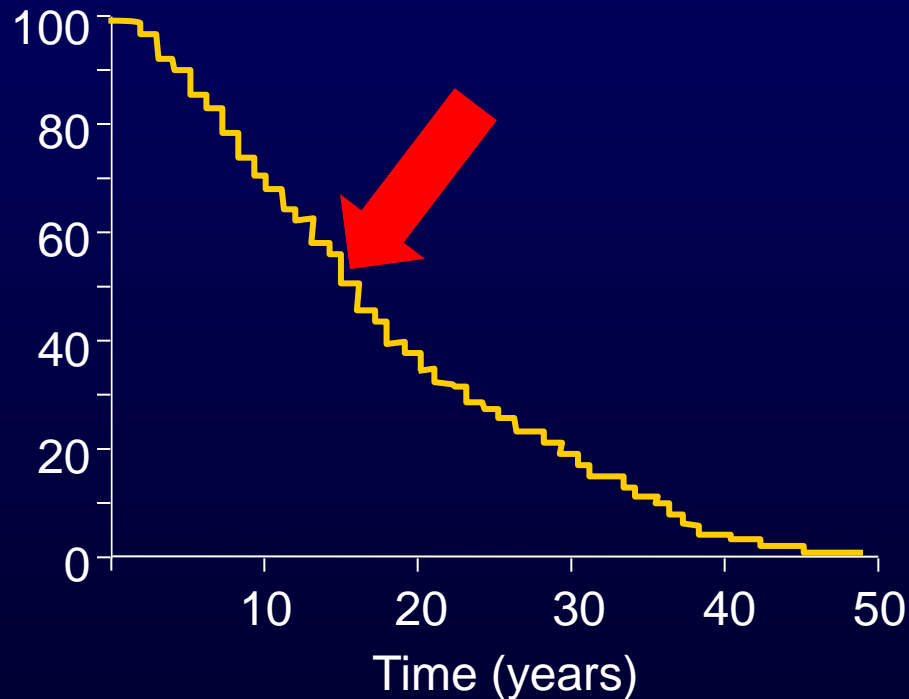
## Help:

- ◆ pharmacoeconomic data
- ◆ scientific data on early treatment (what is lost is not regained),
- ◆ placebo controlled randomized trials,
- ◆ international guidelines (included in the Code)
- ◆ PR strategies

# Progression of untreated MS

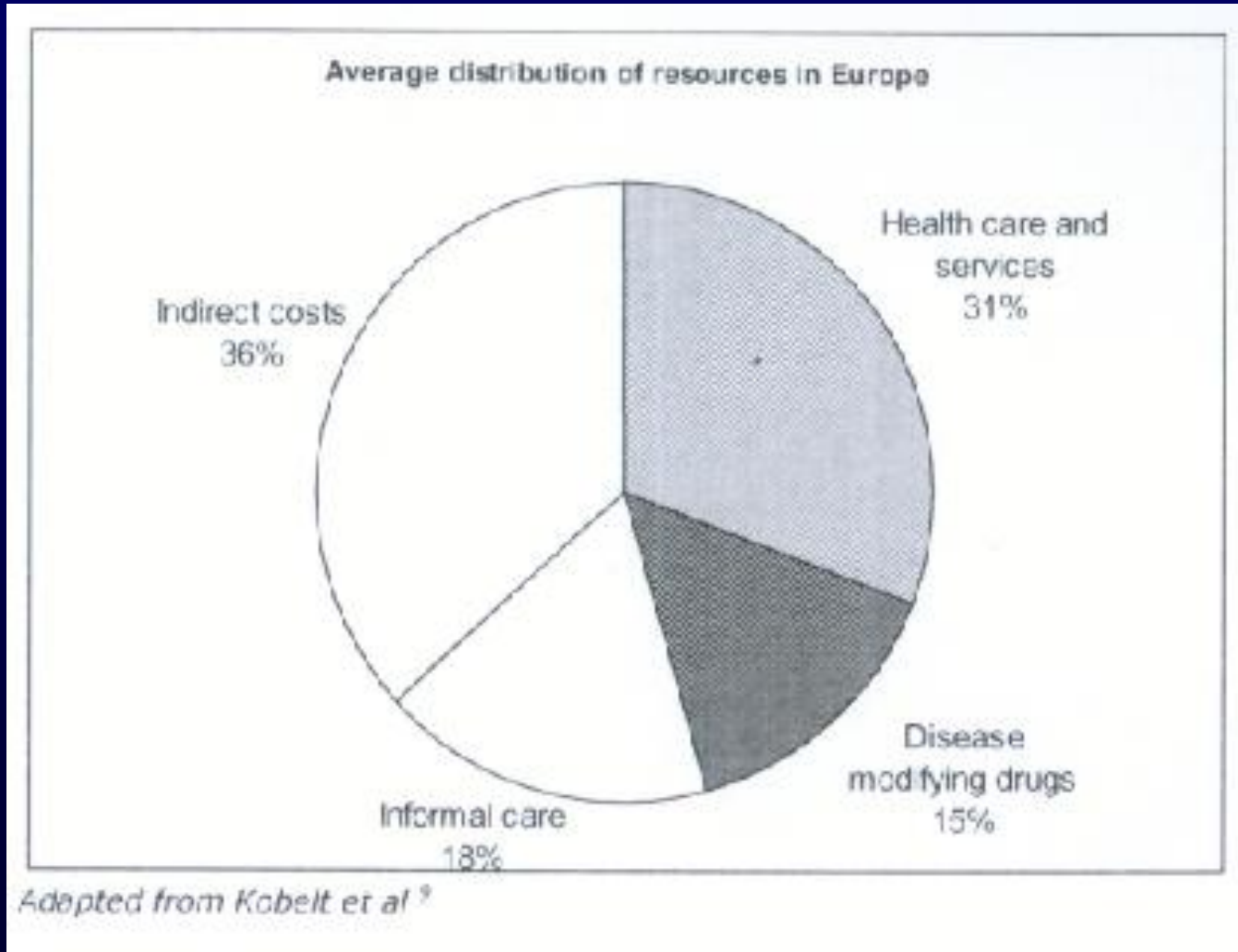
Natural course: Time to EDSS = 6 (n=902)

Conversion of RR MS  
into progressive MS



MS duration in yrs	%
1–5	12.1
6–10	41.3
11–15	57.6
16–25	65.6
26+	88.9

# Split of average costs (10 EU countries, G. Kobelt, 2006)



## Cost of MS studies v EU

- EDSS 0-3: 22 000 € / yr
- EDSS 4-6.5: 45 000 € / yr
- EDSS 7-9.5: 75 000 € / yr

### European Brain Council

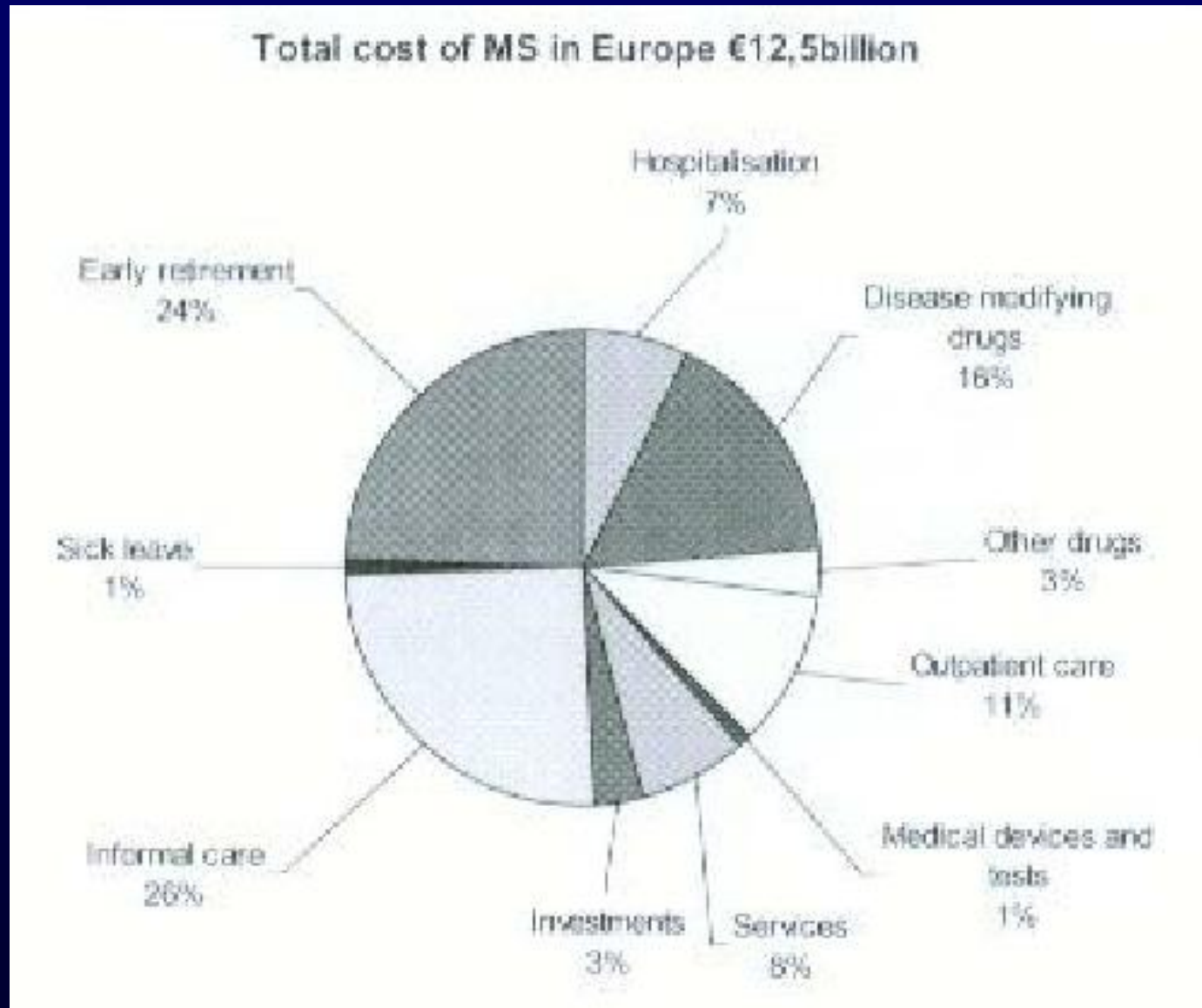
**Average yearly cost of MS = 31 000 €**

(adjustment for purchasing power parity)

Kobelt, Jan 2009

Eur Health Economics

# Total cost of MS in EU, Sobocki P, MSJ 2007



## **Czech Republic: First pharmacoeconomic data (1996-9) after first 2 yrs of DMD Tx (150 pt)**

- ◆ Relapse rate decreased by 69%
- ◆ No of hospital admissions due to acute attacks decreased by 80%

= Step 1



## **Step 2: Determination of costs of MS in CZ (Cost of MS Study, COMS)**

### **■ prospective pharmacoeconomic study**

Ambitious project created after discussions with Gisela Kobelt:

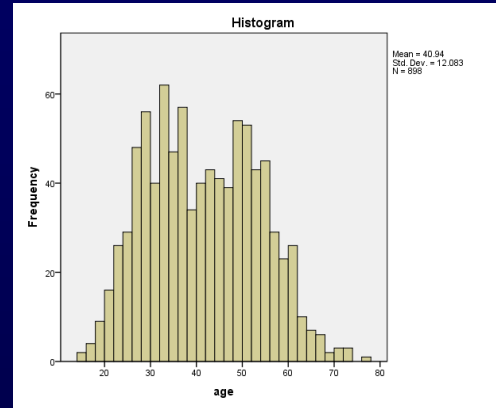
**3 mos of retrospective and 3 mos of prospective  
follow-up of all health and social care costs incl.  
working capacity losses**

**Study started autumn 2005, first part finished 2/2009  
We plan to repeat the survey in 5 years**

# Demography of patients enrolled in COMS

■ 904 patients in total, 658 females, 246 males

■ Age:  $37.3 \pm 16.3$



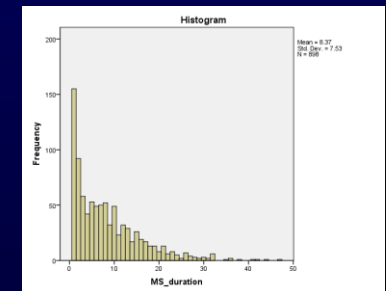
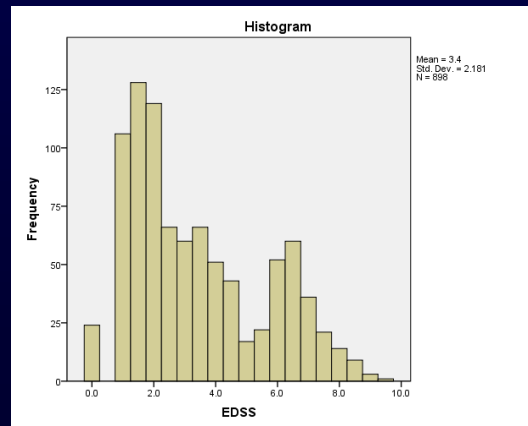
■ MS duration since diagnosis:  $8.3 \pm 7.5$

■ EDSS:  $3.3 \pm 2.2$

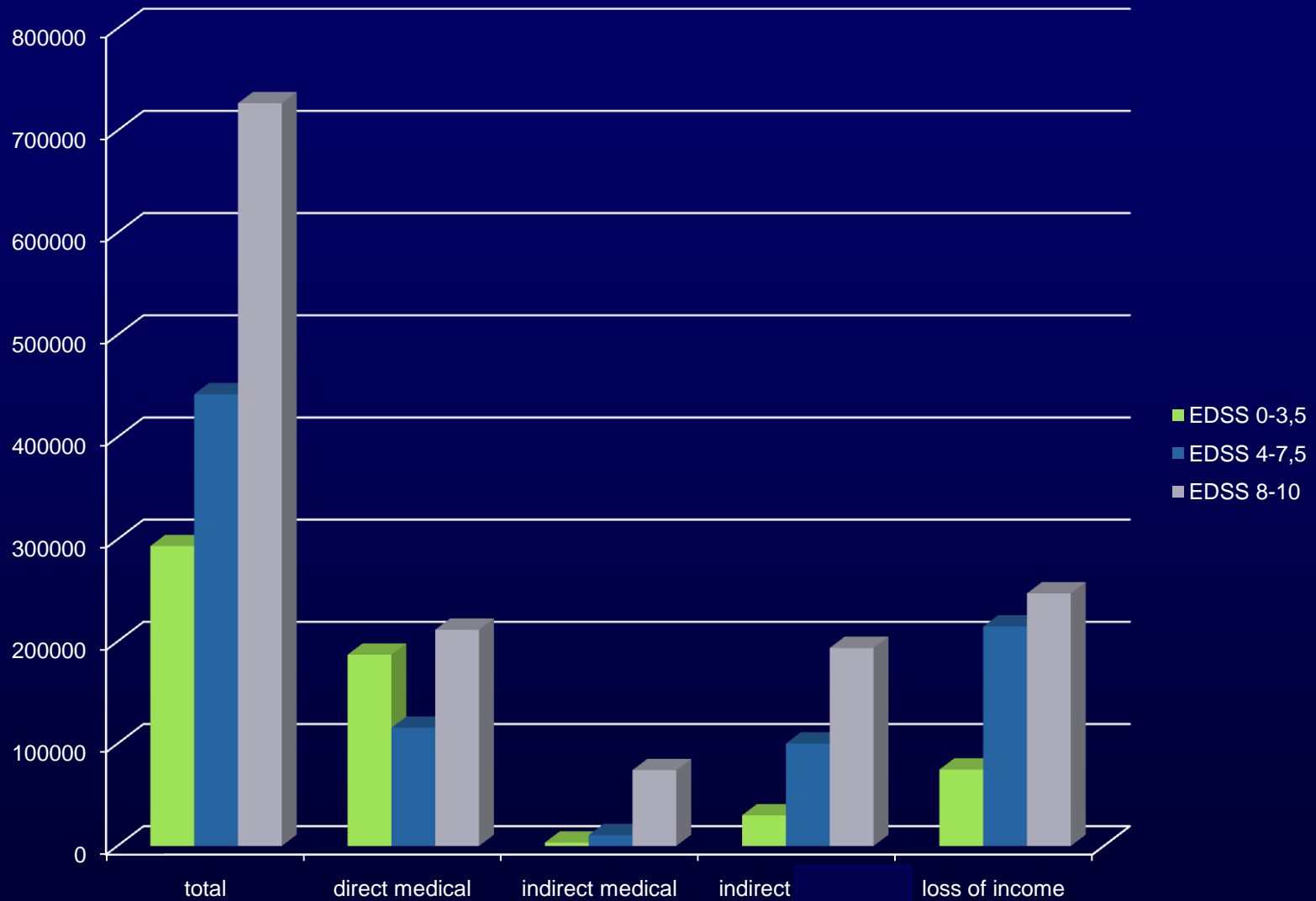
0-3.5 **676**

4-6.5 **235**

7-10 **80**



# RESULTS.....



**727 000 CZK = 29445 Euro**

# Employed ..... pensioned



The message for the society and health care providers:

This is the first real life pharmacoeconomic study in  
Central Europe

showing clearly:

**IT IS WORTH OF INVESTING INTO MS  
RIGHT AT THE TIME OF DIAGNOSIS**

**WAITING FOR DISABILITY COSTS MORE**

**Never ever give up hope !**

